

ULTIMAT DEFENCE LIMITED



Training Environments

Black Wall System 2

Black Wall Components 8

Black Wall Van Cell14

Black Wall Layouts16

Scenario Furniture Solutions22

Bedroom Furniture24

Lounge Furniture26

Kitchen Furniture28

Cell Furniture30

Office Furniture32

Training Rooms34

Bespoke Training Room Products.....36

Bespoke Training Room Projects.....38

Tried, Tested and Trusted

We are the UK's leading manufacturer of officer safety, control and restraint training equipment to the UK police, prison services, NHS and other government agencies.

Ultimat Defence are a truly global brand. Our client base covers every continent of the world. We take pride in our products that we design, manufacture and supply to all our customers; who are located in all four corners of the globe.

Product Development

Regular research and development of innovative yet practical product concepts combined with ongoing improvements in materials and manufacturing methods remain the driving force behind the success of Ultimat products.

With a proven track record, Ultimat assists instructors to deliver training methods that engage students in ways that improve realism, advances skill sets and builds experience without compromising on safety.

We continually invest in new machinery and test our facilities to evolve our manufacturing processes. This allows us to greater understand the ever changing technical properties of raw materials such as fabrics and impact absorbing materials. Comparisons are analysed, allowing the best combination of materials to be used for each product development.

In addition to continued research and development, we also work closely with a number of other training establishments and external test houses. Listening to and studying 'hands on' front line experiences, tempered alongside controlled practical lab analysis, enables us to develop quick and effective solutions to new and emerging threats that our clients may face. We are always open to discussions regarding your needs should you have a forth coming project.

Training

We design, manufacture, supply and install state of the art environments within which training is carried out. Using our many years of experience we can create a perfectly practical solution for you.



Our life-size Black Wall System of modular components create spacial awareness, allowing you to custom build rooms, corridors, confined spaces, vehicles and many more... all to your own requirements. Ultimat provide the very best safe environments for all aspects of training from first aid, officer safety and public order through to firearms training that are robust, fit for purpose and cost effective.

Reality

With more than 25 years producing training equipment, we have now taken the natural progression into the designing, manufacturing and supplying of frontline equipment for officers. Our full range of HOSDB/CAST certified limb protectors have been established in the market for many years, with Ultimat having won a number of extended contracts with police forces throughout the UK. We are also a provider of riot protection equipment, slash and cut protection and method of entry equipment, that enable our Ultimat philosophy of 'From Training to Reality' to come to fruition.



All copyright, design rights and intellectual property rights existing in our designs and products and in the images, texts and design of our website/marketing material are and will remain the property of Ultimat Defence Ltd. We will treat any infringement of these rights seriously.

Ultimat Defence Ltd do not accept liability for any errors or omissions and reserve the right to change information, prices, specifications and descriptions of any content at any time.

Ultimat Defence are the designers and manufacturers of the Black Wall System of modular components.

The Black Wall System gives you total control and allows you to build your very own safe, life-size rooms, corridors, cells, shower blocks, confined spaces, cellular vehicles and much more; bringing another dimension to your scenario and role play officer training. Rooms can be changed and adapted both quickly and easily over and over again, ensuring your training never becomes stale or predictable and all this can be achieved almost anywhere.



The Historic Answer

The solution to providing this type of training environment was to build expensive wooden or steel structures that become a fixed feature within a training venue. One problem with this approach is, every type of scenario needs a bespoke room/area building and this is very expensive and space thirsty.

Once built, this type of area is fixed and not very adaptable, students soon become familiar with scenarios and room layouts. Even worse and unfortunately more common than not, is that only the most basic of training areas are provided, consisting of some gym mats and old worn out equipment. Because these systems limit the students ability to experience a wide variety of room types, ultimately the quality of the training they are receiving in preparing them for duty is often compromised.



Confined Space and Training Environment Solutions



So How Does it Work?

The Black Wall System is simple and intuitive to use, it is made up of carefully designed modular shapes and features freestanding walls, half-height walls, doors, lintels, obstacle blocks and uneven flooring/safety mats.

The pieces are life-size, free-standing yet light enough to be carried by one or two people, they link together using a Velcro system that is both strong and robust once in situ, but allows for the pieces to be easily taken apart and reconfigured within minutes.

Hundreds of training spaces can be created to replicate something as simple as a row of shower blocks, a police/prison cell, or something more challenging for students to cope with; such as a full office or home layout involving rooms, corridors and obstacles to overcome.

The construction of each piece of the system is from the latest lightweight robust foams and heavy-duty custom covering, which is liquid resistant, hygienic and can be simply wiped clean with a damp cloth and any anti-bacterial cleaner, helping to keep maintenance to a minimum.



Black Wall System

What is it Used For?

The Black Wall System is designed for multiple use scenario training. Often OST/C&R training is carried out in large open spaces or in areas marked out on the floor to represent rooms or confined spaces.

With the Black Wall System you are able to construct the room or space required with the knowledge that it is both robust and safe. Firearms units now have the capability of being able to build many training scenarios allowing training to remain fresh and interesting. With the addition of Taser panels that slot easily into the Black Wall System or the use of the new slim line Taser panel that can be hung anywhere within your layout, this now allows qualifying or scenario targets to be used in conjunction within the Black Wall System. Dynamic Intervention Training using paint rounds can also be carried out with the Black Wall System, the paint simply wipes off afterwards.



Black Wall System



With the use of Barricade Lintels and Battle Blocks, obstacles can be constructed allowing students to train for situations that may occur once in the field. The 1m x 1m walls are also load bearing and can be used to

Black Wall System Develops Spacial Awareness

create windows that can be climbed through, or simply used as an observation window allowing instructors to oversee training without causing any extra physical obstruction or interference during a student's training.



Ultimat's scenario safe furniture is 100% compatible with the Black Wall System and rooms can be populated to create even more realism within the setup you have constructed.

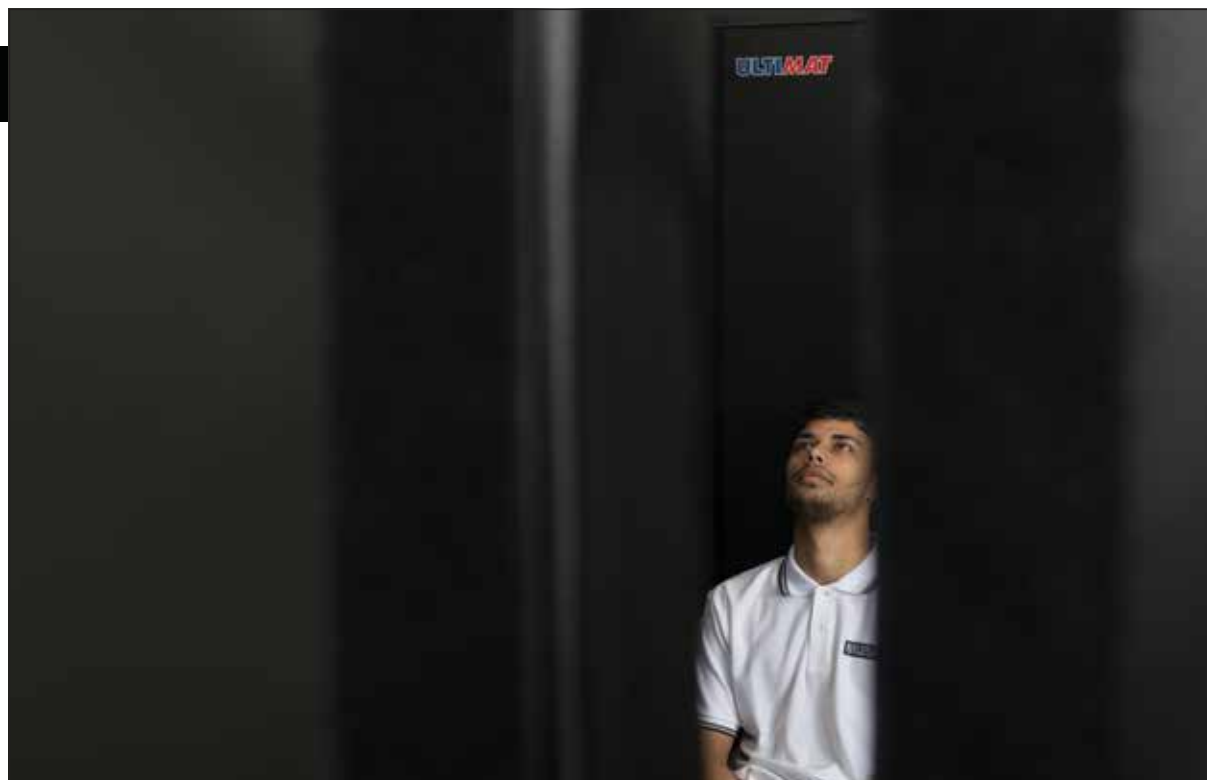
Using the furniture alongside the Black Wall System provides a totally safe environment and at the same time allows the student to react and interact within their surroundings, such as offices, bedrooms, kitchens, cells, living rooms etc. The ease with which rooms and environments can be quickly changed or altered ensures that students don't become complacent about predictable, unrealistic training.



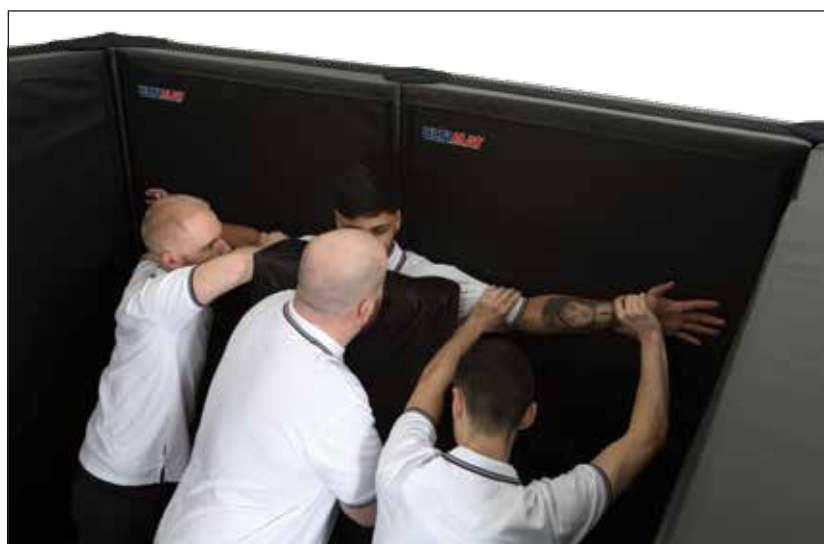


Cost Effective

Rising training costs are always an issue and getting the most out of your equipment or resources is paramount. Many forces are now having to deliver a number of different training skills, OST, Taser, MOE, Specialist training etc. in their existing venues. This often proves difficult when one venue cannot offer everything for everyone, and forces find themselves hiring venues away from their natural home base where serious compromises on equipment's suitability and availability have to be made.



Build Different Environments Over and Over Again



The Black Wall System is the perfect solution to unlock more options from your existing venues. Not only does the Black Wall System save money on the hiring of premises, it saves money involved with the travel costs and most of all, it saves valuable time by giving you the ability to adapt your existing training venue at a moments notice.

Now you're no longer stuck with a particular room/building layout. You decide how you want it to look, what shape and how big the rooms are, where you want the doors, where you require windows. Do you want corridors? Do you require obstacles? You decide! The only limitation is your imagination.

A major benefit is that the Black Wall System is modular, and the entry level to the system is inexpensive. Expansion is simple, you can add to your system one piece or multiple pieces at a time with no minimum purchase, enabling simple, easy growth of your Black Wall System to be carried out at any time in the future, offering real value for money.

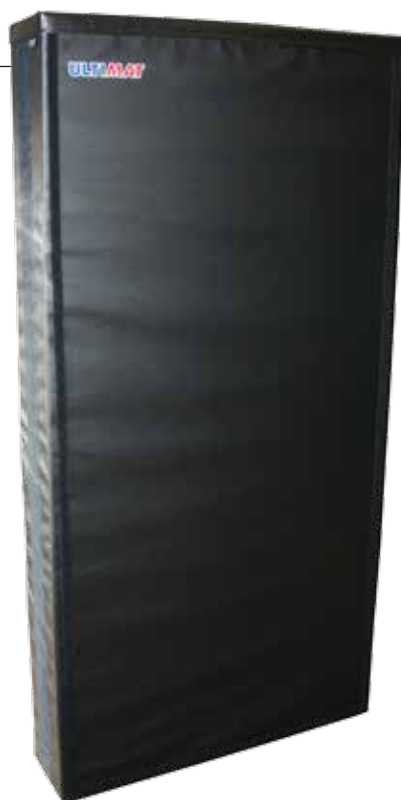
Another major benefit is that your department will have the ability to potentially generate income from other departments and authorities that will wish to share this fantastic, flexible, confined space training system.

“ [REDACTED] Police Tactical Dogs and Firearms Unit purchased your Ultimat walling system several months ago having seen the Ultimat system at a conference. A colleague and I were invited to Ultimat where we were shown the walling system. We previously had a wooden walling system that was very heavy to move. Each piece had a large footprint and the manner in which it attached and flexibility of room set ups was poor. We have used the system on numerous occasions when completing our firearms training. We have completed ARV TAROS training, SFO Dynamic Intervention training and numerous smaller training sessions. We have used the system with paint rounds and this has caused us no problems, we just wash it down afterwards. It soon becomes apparent to those that are used to setting up scenario training that the system is extremely flexible. It allows you to practise a scenario with your team and in a very short space of time (minutes) change the layout (LOE) with one or two people. Our team, particularly some of the older members have commented that the system is far better than buildings that we have previously hired at some expense. The ability to make corridors and rooms that you will find in normal houses as opposed to the old factories and warehouses that we find ourselves borrowing to train in is also invaluable. The system gives us the ability to train on site which increases our contact time with our teams and cuts down travelling costs. [REDACTED] ”

Full Wall Module

Your main unit in the Black Wall System. Weighted at the base they are free standing and easy to fit.

*Dimensions: 2m x 1m x 25cm.
Weight approx.: 32kg.*



Pillar Module

These components have Velcro on all four faces and allow walls to be positioned at right angles to each other. Weighted at the base these modules are free standing.

*Dimensions: 2m x 25cm x 25cm.
Weight approx.: 12kg.*



Barricade Lintel

Used to make lintels across windows or barricades in doorways.

*Dimensions: 1m x 25cm x 20cm.
Weight approx.: 3kg.*



Half Wall Module

These components are used for windows and low walls. They can be climbed over and are key pieces in the system.

*Dimensions: 1m x 1m x 25cm.
Weight approx.: 27kg.*



Lintel/Brace

Used to make doorways and windows and to add strength to corridors.

*Dimensions: 1.5m x 25cm x 15cm.
Weight approx.: 3kg.*

Battle Block

Essential for creating obstacles and areas that can be climbed on and large blockades.

*Dimensions: 1m x 50cm x 66cm or
1m x 50cm x 50cm.
Weight approx.: 13kg.*



Reversible Door

Reversible doors are available in 2 widths, 1m and 70cm wide. They can be hung from either side of your Black Wall System setup and can open both inward and outward. Please note that if a 70cm door is required then a pair of frame reducers are also needed.

*Dimensions: 1.85m x 1m or 70cm x 5cm.
Weight approx.: 4-5kg.*



Taser Target Hanger

Used to hang Taser Targets in a Black Wall System setup.

*Dimensions: 1.95 x 1m x 2.5cm.
Weight approx.: 3kg.*

Window Arch

These window arches add another dimension of reality and are used to create lintels across the tops of window and doors.

*Dimensions: 1m x 25cm x 20cm.
Weight approx.: 2kg.*



Clear PVC Window

Clear PVC windows create a physical barrier between rooms whilst still allowing observation to take place.

Dimensions: 1m x 75cm x 2mm.

Black Wall System Links

Black Wall System links are used to tie the top of your Black Wall System components together by placing across adjoining modules to add additional strength to the structure.

*Dimensions: 20cm x 20cm x 3mm.
Weight approx.: 75g.*



Frame Reducers

Used to reduce the width of the doorway when a narrow door is being used or when smaller openings are required. (Pair)

Dimensions: 1.95m x 15cm x 25cm.

Weight approx.: 5kg (Pair).

Photo shows frame reducers in conjunction with a narrow cell door.



Bench/Train/Bus Seating

Bench/train/bus seating is a PVC covered block. They can be joined with others, either side by side or back to back.

Dimensions: 100cm long x 75cm deep x 100cm high.

Weight approx.: 25kg.

Reversible Cell Door

Reversible cell doors are available in two widths, 1m wide and 70cm. Doors can be hung from either side of your Black Wall System setup and can open both inward and outward. They have a vertical viewing panel to allow for observation. Please note that if a 70cm door is required then a pair of frame reducers are also needed.

Dimensions: 1.85m x 1m or 70cm x 5cm

Weight approx.: 4-5kg



Floor Mat

An essential component of the Black Wall System setup. The floor mat can be used for multiple purposes such as unstable floor surfaces, take down areas or a safety mat when someone is climbing through a window.

Dimensions: 2m x 1m x 7.5cm.

Weight approx.: 8kg.



Special Components Required to make a Van Cell:

Van Floor

The van floor Velcros to the top of 3 Battle Blocks to form one continuous floor in the Van Cell setup. The van floor also has a flat panel that helps to secure it in place and stop the front edge lifting when entering the Van Cell.

Dimensions: 1.5m x 1m x 4cm.
Weight approx.: 4kg.



Van Step

Assists stepping onto the van floor and exactly replicates the step of a real van cell.

Dimensions: 68cm x 50cm x 20cm.
Weight approx.: 3.5kg.



Special Lintel

Similar to the lintel/brace, the special lintel is used across doorways and windows and has additional Velcro to hold the clear PVC curtains in place.

Dimensions: 1.5m x 25cm x 15cm.
Weight approx.: 3kg.



Clear PVC Curtains

Creates a barrier either side of where the internal van door would be. They are made from PVC which allows for an uninterrupted view for instructors and other students.



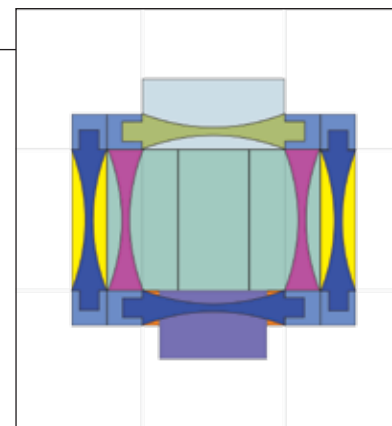
Van Cell

A

- 2 x Half Wall Module 1m x 1m
- 8 x Pillar Modules 2m x 25cm x 25cm
- 4 x Battle Blocks 1m x 50cm x 50cm
- 3 x Lintel/Brace 1.5m x 25cm x 20cm
- 2 x Barricade Lintel 1m x 25cm x 20cm
- 1 x Frame Reducers (Pair)
- 2 x Clear PVC Viewing Window
- 1 x Black Wall Links (Set of 10)

Special components required to make a Van Cell:

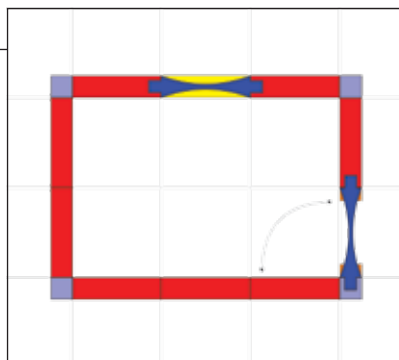
- 1 x Van Floor 1.5m x 1m x 4cm
- 1 x Van Step 68cm x 50cm x 20cm
- 1 x Special Lintel/Brace 1.5m x 25cm x 20cm
- 1 x Clear PVC Curtains (Pair)



Full Wall Module	Half Wall Module		Pillar Module	Barricade Lintel
Lintel/Brace	Floor Mat		Frame Reducers	Reversible Door
Battle Block	Taser Boards	Reversible Cell Door	Window Arch	Train/Bus Seat

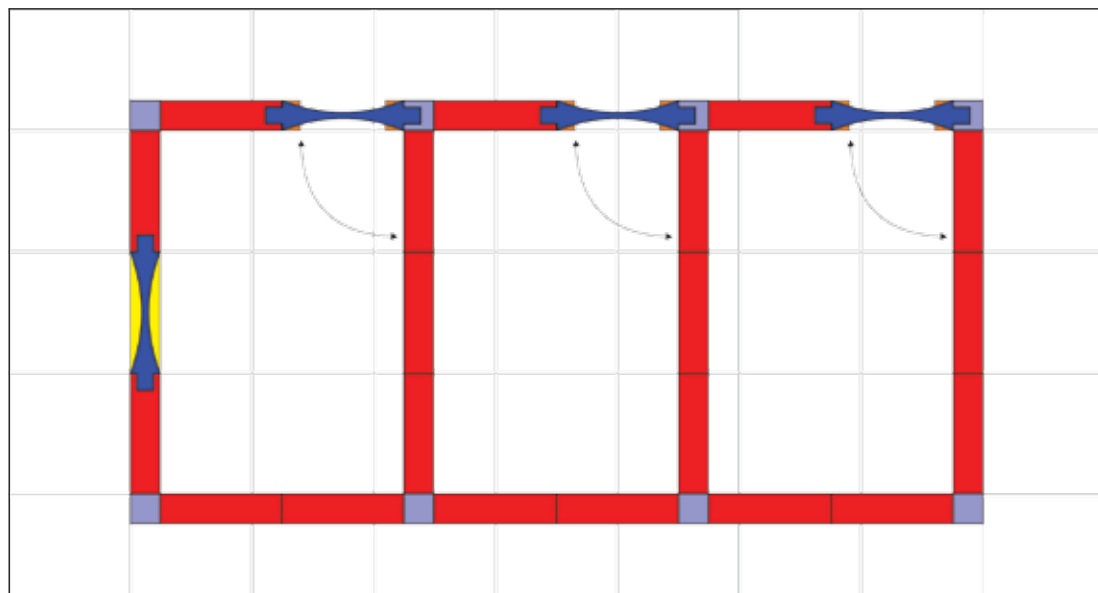
B Single Cell

- 8 x Full Wall Modules 2m x 1m
- 1 x Half Wall Module 1m x 1m
- 4 x Pillar Modules 2m x 25cm x 25cm
- 1 x Narrow Reversible Cell Door and Frame Kit
- 1 x Lintel Brace 1.5m x 25cm x 20cm
- 1 x Clear PVC Viewing Window
- 1 x Black Wall Links (Set of 10)



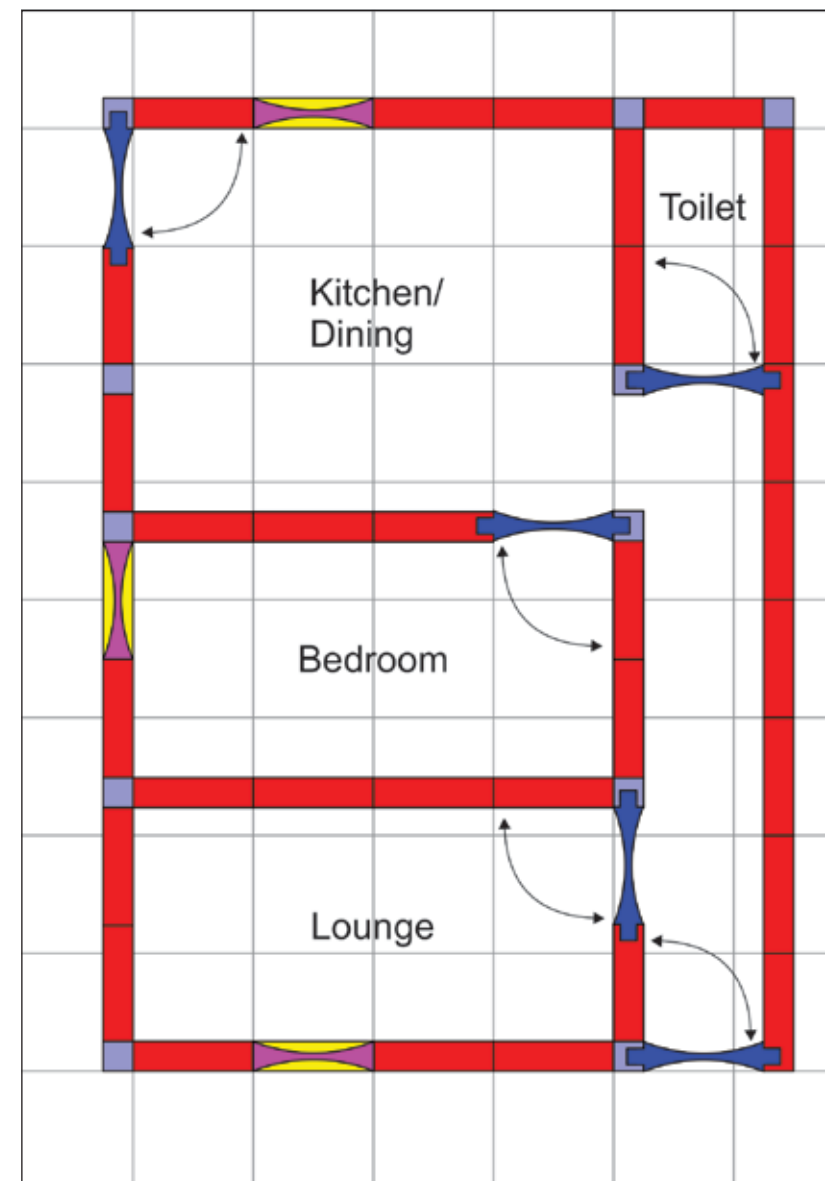
C Adjoining Cells

- 20 x Full Wall Modules 2m x 1m
- 1 x Half Wall Module 1m x 1m
- 8 x Pillar Modules 2m x 25cm x 25cm
- 3 x Narrow Reversible Cell Door and Frame Kit
- 1 x Lintel/Brace 1.5m x 25cm x 20cm
- 3 x Clear PVC Viewing Window
- 3 x Black Wall Links (Set of 10)



D House Layout

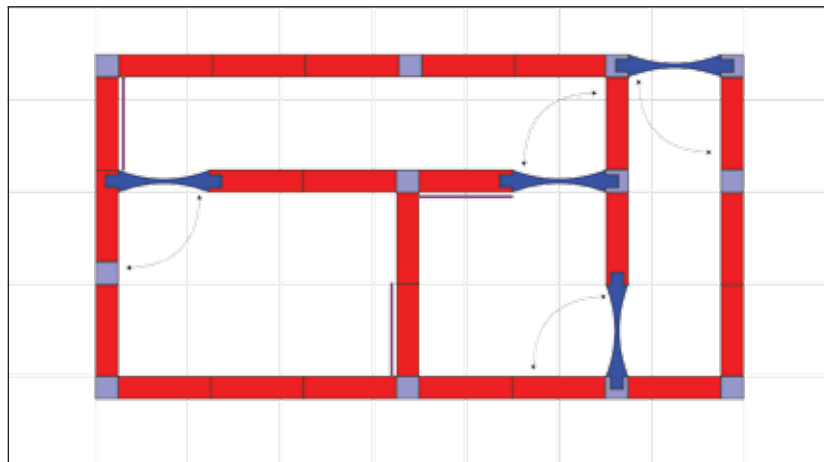
- 32 x Full Wall Modules 2m x 1m
- 3 x Half Wall Module 1m x 1m
- 11 x Pillar Modules 2m x 25cm x 25cm
- 5 x Reversible Door and Lintel Brace Set
- 3 x Barricade Lintel 1m x 25cm x 20cm
- 3 x Clear PVC Viewing Window
- 5 x Black Wall Links (Set of 10)



Full Wall Module	Half Wall Module		Pillar Module	Barricade Lintel
Lintel/Brace	Floor Mat		Frame Reducers	Reversible Door
Battle Block	Taser Boards	Reversible Cell Door	Window Arch	Train/Bus Seat

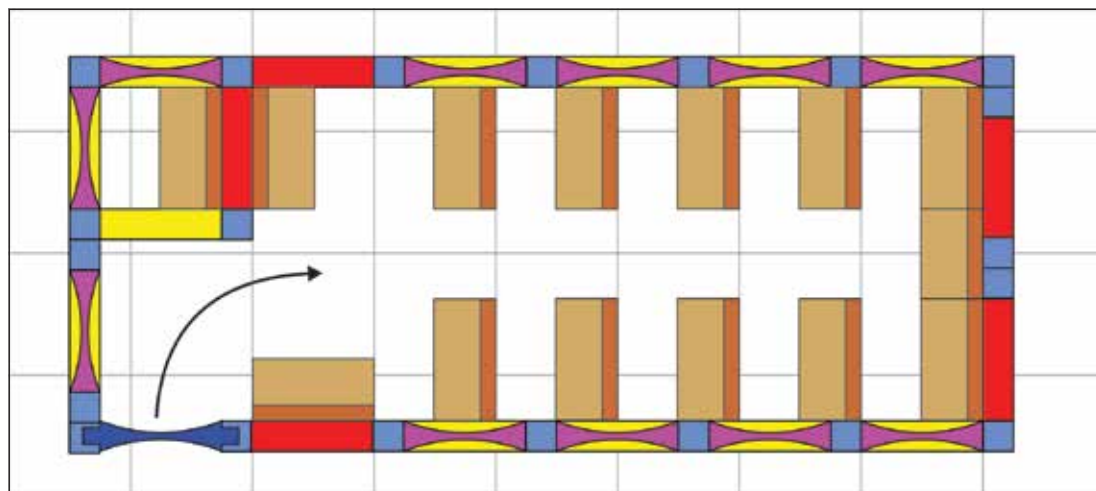
Room, Corridors and Taser Target Hangers

- E**
- | | |
|--------------------------------------|----------------------------------|
| 24 x Full Wall Modules 2m x 1m | 3 x Taser Target Hangers |
| 12 x Pillar Modules 2m x 25cm x 25cm | 4 x Black Wall Links (Set of 10) |
| 4 x Reversible Door and Frame Kit | |



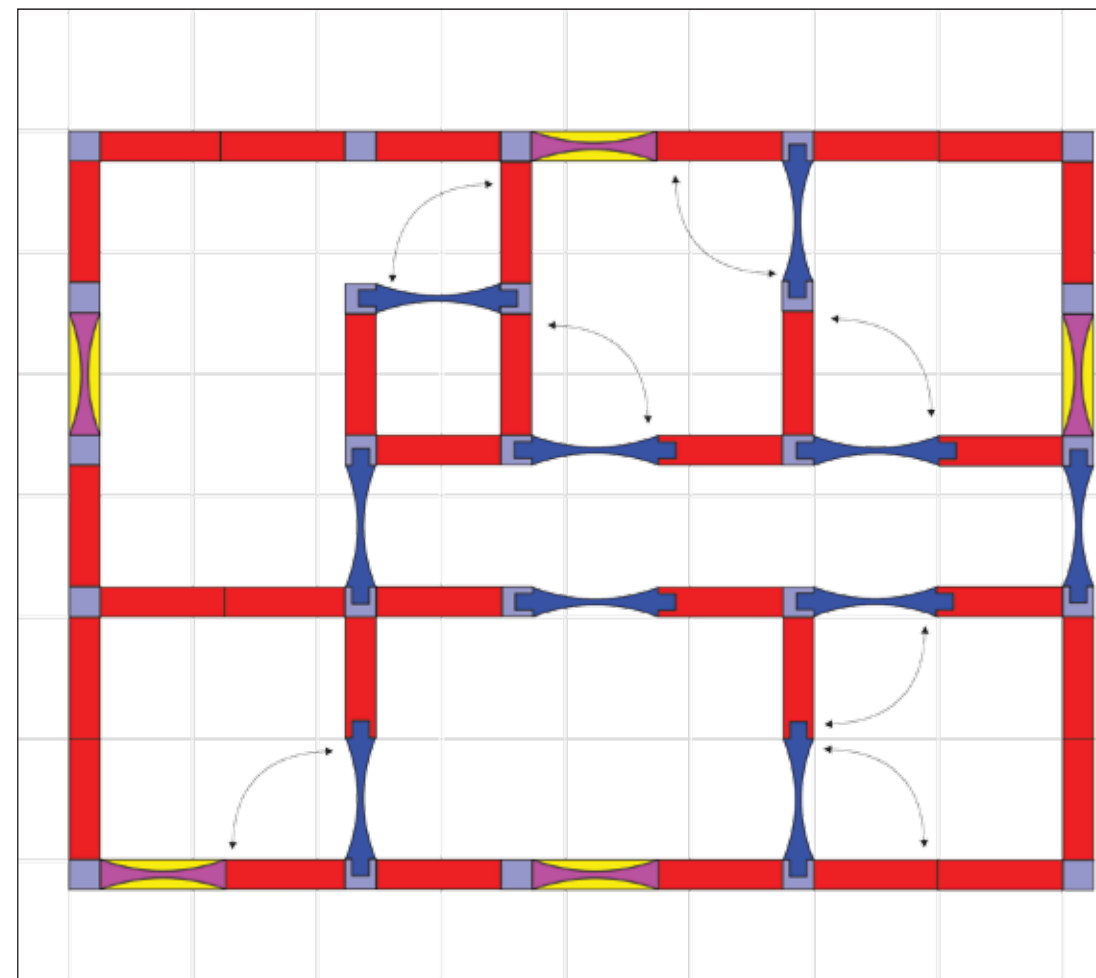
Bus Layout

- F**
- | | |
|--|------------------------------------|
| 5 x Full Wall Modules 2m x 1m | 13 x Bench/Train/Bus Seating |
| 12 x Half Wall Module 1m x 1m | 1 x Bench/Train/Bus Seating Custom |
| 21 x Pillar Modules 2m x 25cm x 25cm | 11 x Clear PVC Viewing Window |
| 1 x Reversible Door and Lintel Brace Set | 4 x Black Wall Links (Set of 10) |
| 11 x Barricade Lintel 1m x 25cm x 20cm | |



Multiple Rooms 1

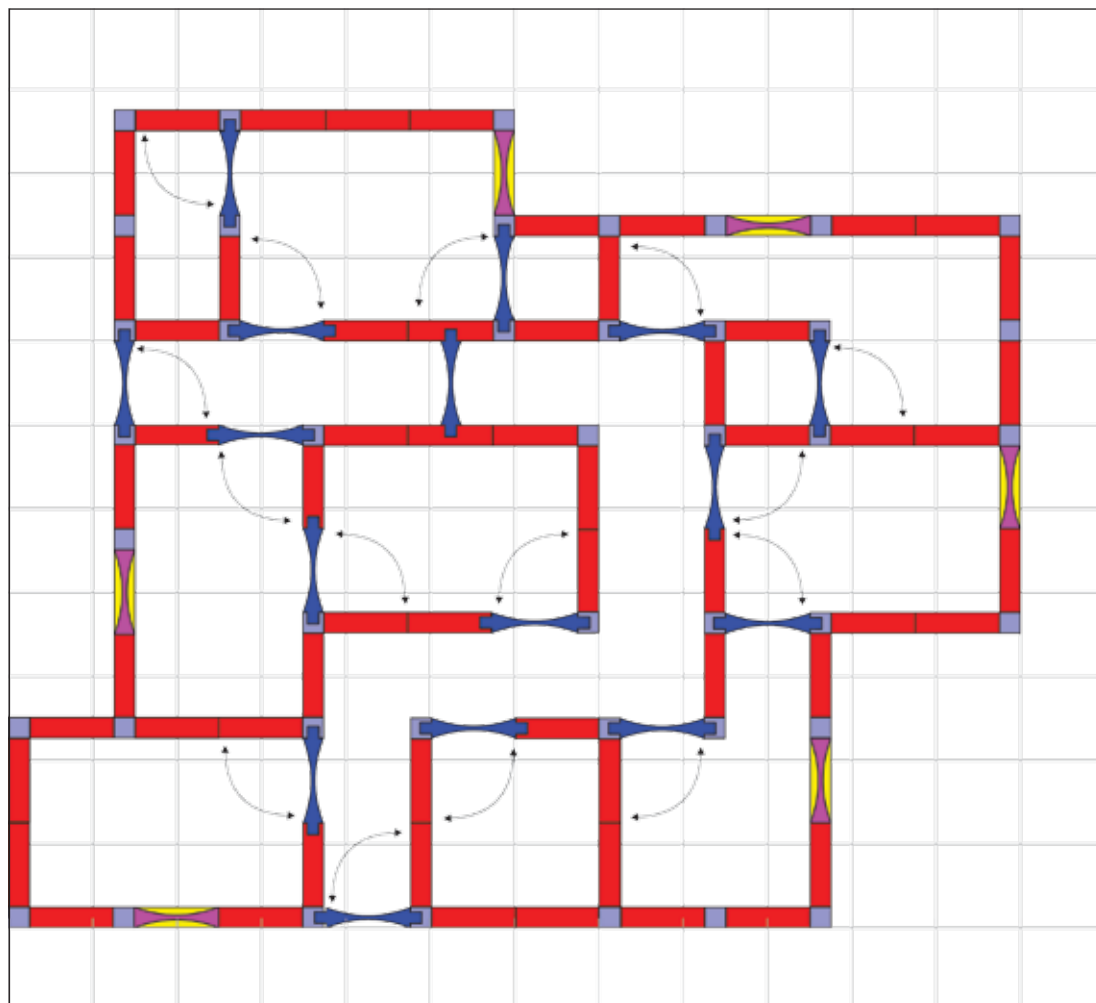
- G**
- | | |
|--|---------------------------------------|
| 32 x Full Wall Modules 2m x 1m | 3 x Lintel/Brace 1.5m x 25cm x 20cm |
| 5 x Half Wall Module 1m x 1m | 5 x Barricade Lintel 1m x 25cm x 20cm |
| 25 x Pillar Modules 2m x 25cm x 25cm | 5 x Clear PVC Viewing Window |
| 7 x Reversible Door and Lintel Brace Set | 6 x Black Wall Links (Set of 10) |



Multiple Rooms 2

H

59 x Full Wall Modules 2m x 1m	1 x Lintel/Brace 1.5m x 25cm x 20cm
6 x Half Wall Module 1m x 1m	6 x Barricade Lintel 1m x 25cm x 20cm
43 x Pillar Modules 2m x 25cm x 25cm	6 x Clear PVC Viewing Window
15 x Reversible Door and Lintel Brace Set	10 x Black Wall Links (Set of 10)



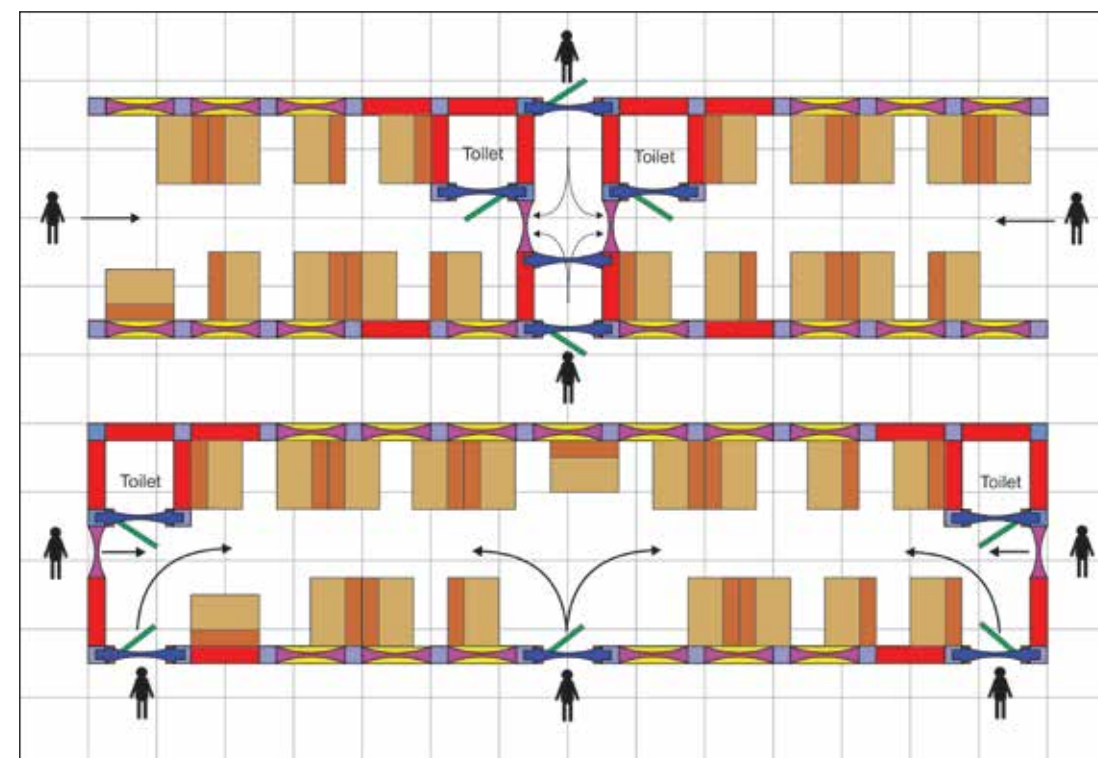
Full Wall Module	Half Wall Module		Pillar Module	Barricade Lintel
Lintel/Brace	Floor Mat		Frame Reducers	Reversible Door
Battle Block	Taser Boards	Reversible Cell Door	Window Arch	Train/Bus Seat

Train Carriage Layouts

I

The same items can be used to create either carriage layout.

12 x Full Wall Modules 2m x 1m	14 x Barricade Lintel 1m x 25cm x 20cm
14 x Half Wall Module 1m x 1m	19 x Bench/Train/Bus Seating Custom
28 x Pillar Modules 2m x 25cm x 25cm	14 x Clear PVC Viewing Window
5 x Narrow Reversible Door and Frame Kit	5 x Black Wall Links (Set of 10)
	2 x Lintel/Brace 1.5m x 25cm x 20cm Custom



These featured layouts are only a small selection of our most popular configurations.

Our modular Black Wall System is extremely versatile and can be set out to meet any of your spacial requirements. We offer a full bespoke design service which is tailored to your exact needs. Any scenario space can be created according to your specification.

Please contact us for further information. We look forward to working with you to create your perfect training environment.

Populating your Black Wall System with life-size, functioning, and robust furnishings really brings your scenario training into the 21st century.

'Setting the scene' enables you to deliver to your students the very best experience in dynamic hands-on reality training, whilst minimising risk by providing them the very safest of environments within which to learn and practise their skills.

What are the Options?

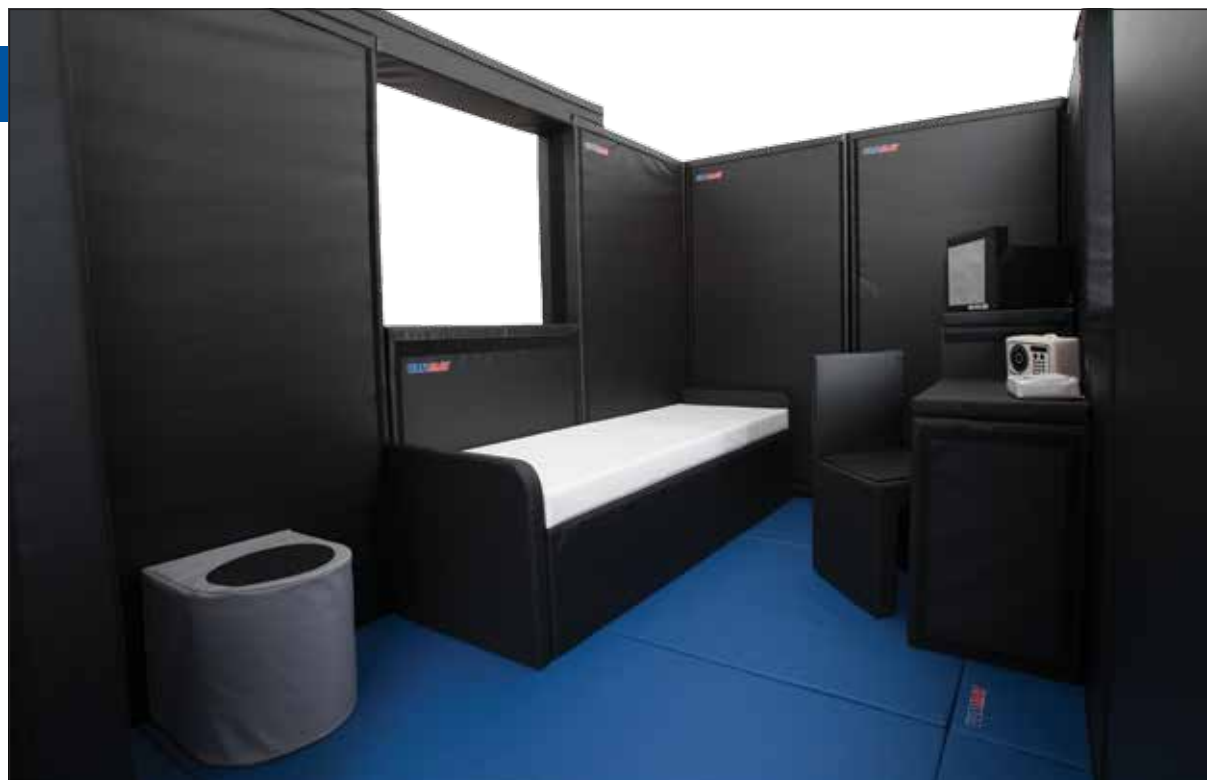
Create bedrooms, living rooms, kitchens, offices, cells and much more.

B Block Furniture

There are two designs of furniture, the first is a solid block of foam which is covered with a hygienic, strong and tear-resistant PVC cover. Graphics are applied to the exterior of block furniture to give a lifelike representation but they do not function, i.e. doors, drawers etc. do not open.

Each item is true to life for size and extremely safe. They can be knocked over or lay down and climbed upon repeatedly even in operational footwear.

All foams used in block furniture are British made and conform with current UK F/R regulations.



Set the Scene with our Safe Scenario Furniture

F Functional Furniture

The second type is 'breakaway' or 'functional furniture'.

This unique design offers combinations or all of the following (dependent upon the particular item): the ability to open and remove doors, breakout shelves, completely breakdown and rebuild the item for 'angry man' scenarios, hide items in the Velcro hide areas. Functional furniture offers the ability to dismantle and rebuild to another item, link two or more together to make bigger or new items of furniture.

As with the block furniture each item is true to life for size. Ultimat functional furniture is currently in use in many law enforcement establishments throughout the UK and has been the scenario furniture of choice for M.O.D. and foreign law enforcement including US Homeland security and the Lebanese government.

The furniture has been satisfactorily tested with live ammunition 9mm and 5.56mm NATO. The foams and covers react well and don't leave large exit holes, thus extending the life of the furniture in these training situations. Furniture for ballistic training is supplied with smooth covers to reduce the amount of powder residue left behind after cleaning.



B Alarm Clock

PVC covered foam block including graphics of LED time.

Dimensions: 5cm high, 20cm wide, 18cm deep.



B Draw Unit

PVC covered foam block including graphics showing three drawers.

Dimensions: 55cm high, 50cm wide, 50cm deep.



B Wardrobe

PVC covered foam block including graphics showing 2 doors and handles.

Dimensions: 180cm high, 80cm wide, 50cm deep.



F Wardrobe

Functioning doors and shelves with Velcro hiding areas. Breakaway doors, sides, back and shelves velcro back together again and again.

Dimensions: 184cm high, 80cm wide, 50cm deep.



B Side Lamp

PVC covered foam block with imitation shade.

Dimensions: 43cm high, 27cm wide, 27cm deep.



F Single Bed

Base, mattress and headboard with Velcro hiding areas.

Dimensions: 6ft long, 3ft wide, 21" high.
Headboard: 100cm x 80cm x 4cm.



F

Armchair

Breakaway arms and back, hidden flaps for search concealments, can link with second or third chair to make 2 or 3 seater settee.

Dimensions: 86cm high, 90cm wide, 70cm deep.



F

Coffee Table

Two piece construction. Table top is removable from the support base. Velcro hiding area under the top section.

Dimensions: 43cm high, 120cm wide, 60cm deep.



B

Video Stand

Block with graphics of video games console etc can be used as stand for TV and other items.

Dimensions: 50cm high, 106cm wide, 40cm deep.



B

DAB Radio

PVC covered with graphic buttons and a webbing handle.

Dimensions: 15cm high, 25cm wide, 10cm deep.



B

Plasma TV

Wall mount or free-standing, with Velcro hiding area and graphics of screen and switches.

Dimensions: 60cm high, 106cm wide, 5cm deep.



F Kitchen Chair

Full-size kitchen chair. Seat can be removed from back and double up as a side table.

Dimensions: 85cm high, 40cm wide, 44cm deep.



Kitchen Table

Kitchen table with rip-off table top and Velcro hide area under top.

Dimensions: 70cm high, 100cm wide, 100cm deep.

F

F Sink/Worktop

Kitchen work top with sink graphics, washing machine and cupboards.

Dimensions: 90cm high, 200cm wide, 50cm deep.



Knives and Block Full Set

TWKBF

A free-standing flexible foam knife block housing rubber kitchen knives, butchers cleaver, bread knife, carving knife, slicing knife and chef's knife.

Size approx.: 17cm x 24.5cm x 39cm.
Weight approx.: 2.4kg.



Bottle

Foam bottles are ideal for scenario training and can be supplied as a full bottle or broken bottle.

Size approx.: 26cm x 7cm x 7cm.
Weight approx.: 142g.
Finish options:
Plain or painted label.



TWBP

TWBBP

Fridge Freezer

B

PVC covered foam block including graphics showing two doors and handles.

Dimensions: 160cm high, 60cm wide, 55cm deep.



F

Cell Chair

Full-size chair. Seat can be removed from back and double up as a side table.

Dimensions: 85cm high, 40cm wide, 44cm deep.

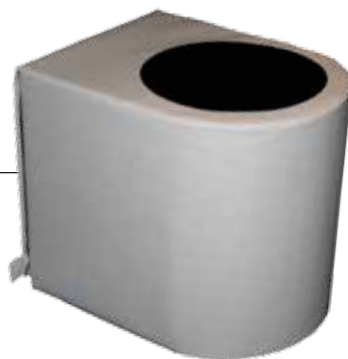


B

Cell Toilet

Cell Toilet PVC covered block.

Dimensions: 40cm high, 36cm wide, 45cm deep.



Cell Desk

The cell desk is manufactured to the same dimensions as found in the new Titan prisons. It can be used in conjunction with the office chair.

Dimensions: 75cm high, 70cm wide, 45cm deep.

F



Cell Cupboard

Cell cupboard with shelving. Manufactured to the same dimensions as found in the new Titan prisons.

Dimensions: 100cm high, 70cm wide, 45cm deep.



F

Cell Bed

Base, mattress and headboard with Velcro hiding areas.

Dimensions: 200cm long, 70cm wide, 60cm high.



B

Filing Cabinet Large

PVC covered foam block including graphics showing four draws.

Dimensions: 130cm high, 50cm wide, 60cm deep.



B

Filing Cabinet Small

PVC covered foam block including graphics showing two draws.

Dimensions: 65cm high, 50cm wide, 60cm deep.



Office Chair

Full-size chair. Seat can be removed from back and double up as a side table.

Dimensions: 85cm high, 40cm wide, 44cm deep.

F

B

Office Desk

Large office desk with leg space and Velcro hiding areas including graphic doors and draws.

Dimensions: 75cm high, 155cm wide, 70cm deep.



Portable TV

PVC covered foam, block including graphics showing screen and switches.

Dimensions: 35cm high, 35cm wide, 35cm deep.

B



Bench/Train/Bus Seating

Bench/train/bus seating is a PVC covered block. They can be joined with others, either side by side or back to back.

Dimensions: 100cm long x 75cm deep x 100cm high. Weight approx.: 25kg.

F

F

Flat Bench

Large flat benches can be used for multiple applications such as waiting room or classroom seating. These flat benches are also ideal to be used as seating in Dojos to remove the possibility of damaging mats. Manufactured from heavy duty PVC.

Dimensions: 2m x 50cm x 50cm.



Ultimat Defence Ltd are the market leaders in the design, manufacture and installation of Dojo training rooms supplied directly to many HMP, PSC, police, NHS, military and private sector establishments worldwide.

After much dialogue with various self-defence trainers, it was found that many training environments were fitted without any prior input or feedback from the end user. Many of these rooms were fitted by companies which may have had little or no experience on what was actually expected from a self-defence room.

Instead they fitted rooms based upon knowledge drawn from gymnastic or sport backgrounds. As a consequence, in many circumstances Ultimat found Dojos to be of inadequate specification and trainers having to adapt or amend their training practise.

Ultimat's aim is to supply equipment that is specially designed for the job in hand. Previously most Dojos used gymnastic mats or judo mats. Ultimat have researched and developed specialist materials and carefully designed mats for law enforcement establishments, selecting and blending the best materials and manufacturing processes.

Ultimat's floor mats, safety wall padding and other training products benefit from:

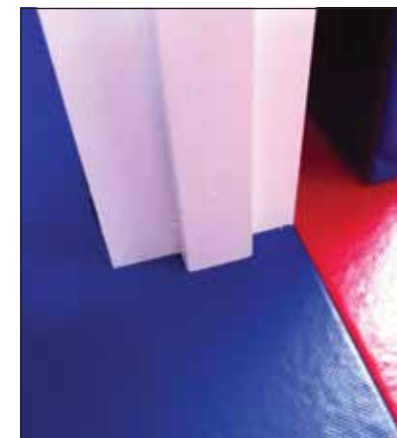
- Improved impact absorption - less stress to ankles, knees and impact incidents
- More life-like feel to floor areas - no more soft spongy floors
- Ability to use regular footwear - with only cosmetic damage
- Longer life expectancy - of the rooms both dojos and VP cells
- Capability to deal with live tools - such as riot shields and handcuffs with minimum impact on the Dojo

In addition to Ultimat's unequalled quality and workmanship, you will have the opportunity of working with our team to design a custom facility that delivers exactly what you need. Ultimat Defence are unique in that we have extensive knowledge and experience of specialist mats and wall padding for Dojos and cell areas. We also



Bespoke Dojo Design, Manufacture and Installation

design and manufacture the very best officer safety equipment which is employed during the day to day use of these areas. This includes the UK's best range of training suits for both instructors and students, striking equipment such as punch pads, strike stations and baton shields, and not forgetting specialist items such as movable walls, Taser lanes and approved Taser qualification targets.



Key Features and Bespoke Fitted Products

Ultimat's staff pride themselves in delivering the highest quality equipment and providing an unrivalled customer service record. In order to achieve this, we tailor to our customer's individual needs and produce all custom-sized and bespoke shaped panels on site, setting up our mobile production equipment.

Some of our key features and bespoke fitted products available on request include the following:

- Padded window frames
- Padded doors and handles
- Socket or utility access panels
- Padded whiteboards
- Window frosting
- Instructor warning signage
- Corner strike stations
- Removable wall panels for cleaning
- Rubber-coated anti-slip base on mats
- Polycarbonate cell window replacement
- Intricate shape cutting capability on floor mats
- Life-size scenario training targets
- Padded scenario training furniture
- Black Wall free-standing modular wall system



Training Room Graphics

With all Ultimat Dojos, graphics can be applied to the wall padding, often eliminating the need to attach large posters to the wall padding with the statements of safe words written on them, as often seen. Using this method the walls can be used for training without the worry that the graphics will come off. Instructions along with safe words and statements are available and can be positioned where requested on site. These graphics are installed at no additional cost when purchasing a Dojo and installed by Ultimat. Custom text can be produced upon request at additional cost.



Door Padding

Doors within training environments often cause one of the greatest hazards, with the danger of either falling through a door, someone opening a door into the dojo, or the door handles and viewing panels themselves presenting a danger. By padding all or a large proportion of doors within a dojo will help to reduce the risk of injury, however not all areas of the door can be covered due to handles, viewing panels and hinges etc.



Post Protectors

Post protectors can be manufactured to fit any size of post or half post and can be used in dojos, sports venues or as a health and safety solution. All of our post protectors are made to a standard 2 metres high and 50 millimetres thick and constructed using a heavy-duty PVC cover. These can be supplied and form part of a dojo, or for a quotation simply provide us with accurate post dimensions and the height you require.



Wall Padding

Wall padding manufactured by Ultimat is supplied as standard at 2 metres in height, 1 metre wide and 50 millimetres thick. This wall padding is manufactured in a strong PVC case with a Velcro grid system stitched to the rear which allows the removal of panels for deep cleaning or to be removed should the venue need to be relocated.

In addition to standard wall padding panels, custom-sized panels are manufactured on site or to dimensions provided. This allows for wall padding to perfectly fit a room or manufactured to fit around windows or other objects that cannot be repositioned.



Padded Whiteboard

The dry wipe padded whiteboard eliminates the need for free-standing whiteboards or unprotected walls, where dry wipe whiteboards are needed. The new dry wipe padded whiteboard is designed to fit into any new or existing Ultimat wall padding installation, allowing you to position your whiteboards where you want, and with the knowledge that it gives you the same level of protection as any other Ultimat standard wall padding. The dry wipe padded whiteboard has an additional clear PVC covering that allows you to write on it using dry wipe whiteboard markers. The ink simply wipes off using either a cloth or whiteboard eraser. The padded whiteboard also comes with a marker pen holding pouch. Replacement clear PVC covers and pen holding pouches can be purchased separately.





Home Office

This Home Office Dojo must be the highest in the country as it is situated on the 21st floor and boasts what must be the best view from a Dojo anywhere in the country. Over 100sqm of heavy-duty control and restraint matting were installed and three walls covered with Ultimat's wall padding, all designed to be used with outdoor footwear and training aids.

In addition to the Dojo, a large amount of Black Wall was also purchased in order to perform the following roles, the first being able to construct various close spaced training environments, and secondly to form a temporary wall in front of the windows when baton training takes place. Four large flat benches were also supplied to form seating for up to sixteen people.



Taser Room

As the manufacturer of the Taser boards and the ever increasing demand for Taser training, Ultimat also install bespoke Taser training facilities. With over 30 Taser boards secured to the walls, this allows for a large number of officers to carry out qualification shots at the same time.

The Taser boards can also be removed from the walls and using the Velcro hinges, rooms, corridors and confined spaces can be created to allow scenario targets to be used for decision making. Scenario furniture was also supplied to form part of the Taser training.



Prison Venue

This new build, forms part of a state-of-the-art training facility at one of the new Titan prisons. With a large main area leading into a replica cell constructed in one corner of the room, heavy duty control and restraint matting was fitted throughout including 3m x 2m red areas to represent a cell floor.



All walls within the Dojo and cell were covered in wall padding and the addition of a Ultimat padded whiteboard. The cell was also populated with our range of scenario cell furniture and a custom-made wall mounted sink was also installed.



Prison Training College

This prison venue now boasts three Dojos with this new addition. With over 125sqm of heavy-duty control and restraint matting, including the cell constructed in one corner, this site is designed for medium to heavy duty training with outdoor footwear. All walls within the Dojo and cell have standard and custom-made wall padding, an Ultimat padded whiteboard was also installed.

Police Venue

This police Dojo forms part of a new build training facility. With over 200sqm of heavy-duty control and restraint matting and with all four walls padded, this Dojo is able to withstand a medium to high amount of training using outdoor footwear. As well as the walls, both double doors and cupboard doors were also padded in red to highlight a danger and reduce the risk of injury.



In order to get your new training room underway we offer a number of services, just choose how you want to proceed and leave the rest to us...

1 Buy and Self Fit

Simply tell us the quantity of Ultimat Floor mats or Safety wall panels you require, we will manufacture them for you in the colour breakdown you require and deliver them direct to your facility.



Our standard size C&R floor mats are 2m x 1m x 40mm, 1m x 1m x 40mm. Safety wall padding is 2m x 1m x 50mm, other bespoke sizes are available. Just give us

the quantities you require and the dimensions of any special sizes, and we will supply a competitive quote.

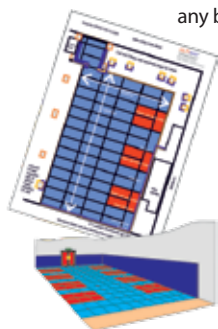
2 Assisted Self Design & Fit

Speak to our sales representative and brief him on your needs then send us a drawing of the room you want fitting out or refurbishing. You will need to supply a plan of the overall area along with measurements and photographs, including any details such as doors, windows and pipe work etc.

We can then supply an estimate based on your information. If you then wish to proceed to a full design and build service then that option is still open or we can carry on to completion based on your details and measurements supplied.

3 Design & Bespoke Fitting

We can arrange for a site visit and consultation during which we will survey and take measurements of your venue and discuss the options available, including any building work that may need undertaking.



A plan of action will be drawn up and working drawings, plans and time scales developed, from which a quotation will be supplied.

There is a charge for this service, if the project is successful and results in the order been placed with us, then the cost of the design service will be deducted from your final invoice.

4 Large Projects & New Builds

If your Dojo is part of larger project then we can help. Ultimat have worked on Dojo projects with some of the biggest construction companies in the UK including Keir Construction PLC, Mansell's Construction PLC, Wilmot Dixon PLC, Vinci Construction PLC and Wates Construction PLC.



Ask your contractor to contact us for more information about how we can help.

5 Factory Visit

Why not visit our factory and see for yourself the options available in our very own Dojo showroom. We will provide everything you need to help design your own training facility including a cell area with our 'try before you buy' policy. This allows you access to all of our specialist items and the opportunity to see and feel for yourself what is available to enhance the delivery of your officer training. Half days, full days or even two day visits can be booked.

Visits are available, just ring to book this FREE opportunity to try everything from a rubber knife to a fully equipped Dojo. Following your factory visit you will be in a position to decide whether to opt for the self-fit, self-design or the design and build service.

6 Mobile & Temporary Dojos

Ultimat have a range of mobile training solutions, if you require easy moving and setting up options then we have the answer whether you are moving from venue to venue or don't have the luxury of a permanent training area, our mobile mats are the perfect answer.

We have several sizes of mat and we even have a 'Dojo in a bag' that can be transported by one person in an estate car or small van.

We also have a number of mats and wall padding that are available to hire.



From Training to Reality

Ultimat Defence offers a full range of training equipment to complement all of our training environment solutions.



Personal Protection



Training Weapons



Training Suits



Strike Pads



Taser



Limb Protectors



Slash and Cut



Method of Entry

And much more...

For further information
please contact us
to receive your
copy of our
Product Guide

ULTIMAT
DEFENCE
LIMITED



