

# SCOUT BLACK

Art. No. 206307



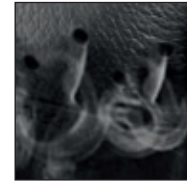
## CE EN ISO 20347:2012 O2 HRO HI CI WR FO SRC

Color: black, Waterproof leather, 1,9 – 2,1 mm, waterproof and breathable with GORE-TEX® Extended, leg height 17 cm, antistatic, sole 016

Available sizes UK 3½ – 12, Extra large sizes 12½ – 14



206307



HAIX® Climate System



HAIX® 2-Zone Lacing



### Upper Material

Waterproof leather, hydrophobic, breathable (4.0 mg/cm<sup>2</sup>/h), 1.9 – 2.1 mm thick

### Inner Lining

GORE-TEX® Extended; 3-layer GORE-TEX® laminate, waterproof and breathable. Highly abrasion-resistant lining with fleece midlayer. Optimized- climate comfort for all year seasons and excessive use.

### Insole

Dimensionally stable, torsion-proof, avoids punctual pressure (e.g. of stones).

### Sole

Rubber/PU walking sole with proven street/ terrain tread, wear resistant and non-slip traction; large, bevelled contact surface and superior bending comfort. Oil and gasoline resistance and non-marking characteristics. Heat resistant. Compliant with EN ISO 20347:2012.

### Foot bed

Anatomically formed, exchangeable, washable, very good moisture absorption, dries quickly.

### HAIX® Climate System

The HAIX® Climate system uses the pumping movement, which permits air circulation with every step – warm air is released through the Micro-Dry lining at the top of the boot leg.

### HAIX® 2-Zone Lacing

Two Zone Lacing System enables a separate adjustment of the boot to the foot and leg area.

### HAIX® Smart Lacing

Smooth and non-pressure adjustment of the boot to the foot, quick lock and lace pocket.

### Sun Reflect

Reduces the heating effect of the upper leather by direct sunlight. Sunlight is reflected by the leather, keeping the leather and the feet cooler.

### Others

Lacing system with eyelets permitting smooth movement, pulling strap, manually applied rubber sidewall on the front and back of the shoe for a better durability, black sole, antistatic.

UK	3	3½	4	4½	5	5½	6	6½	7	7½	8	8½	9	9½	10	10½	11	11½	12	12½	13	13½	14	14½	15
EU	35	36	37	37	38	39	39	40	41	41	42	43	43	44	45	45	46	47	47	48	48	49	50	50	51
US	4	4½	5	5½	6	6½	7	7½	8	8½	9	9½	10	10½	11	11½	12	12½	13	13½	14	14½	15	15½	16

### HAIX®-Schuhe, Produktions- und Vertriebs GmbH

Auhofstrasse 10, 84048 Mainburg, Germany  
T. +49(0)8751/8625-0, F. +49(0)8751/8625-25  
info@haix.de, www.haix.com