

BLACK EAGLE® ATHLETIC 2.0 N GTX

mid / brown
Art. No. 330014

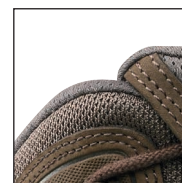
CE EN ISO 20347:2012 O2 HRO HI CI WR FO SRC

Nubuk leather/textile, waterproof and extremely breathable with GORE-TEX® Extended, leg height 15 cm, antistatic, sole 018

Available sizes UK 3 – 12, Extra large sizes UK 13 / 14 / 15



330014



HAIX® Climate System



Upper Material

Nubuk leather/textile combination.

Inner Lining

GORE-TEX® Extended; 3-layer GORE-TEX® laminate, waterproof and highly breathable. Abrasion-resistant lining with optimized climate comfort, especially for flexible alternating inside and outside use.

Insole

Comfortable, cushioning, moisture repellent, anti-bacterial. Separate heel shape for good cushioning and foot insertion. "AIRFLOW" channels.

Running sole

Made of rubber; oil, petrol and heat resistant as well as cold insulating compliant with EN ISO 20347:2012, non-marking and self cleaning

Anti Slip

Excellent grip on a variety of terrains, even in the cold due to specific outsole design and use of special rubber.

Durable Sole

Rubber mixture for long durability.

Midsole

Elastic two-layer PU midsole, lightweight, cushioning effect. Stabilization zone for optimal pressure distribution on uneven terrain.

HAIX® Climate System

The HAIX® Climate system uses the pumping movement, which permits air circulation with every step – warm air is released through the Micro-Dry lining at the top of the boot leg.

Dynaframe

HX design element made of tensile and tear-resistant PU material. Perfectly covers the midfoot area and transfers traction forces of the lacing elements. The heel clip stabilizes the rear foot.

Stabilizer

Asymmetrical PU for stabilizing the heel.

Smart Lacing

Smooth and non-pressure adjustment of the boot to the foot, quick lock and lace pocket.

Others

Low weight, pulling strap, closed lacing system with quick closure and lace pocket, additional tip protection, metal-free, antistatic, suitable for fast roping, sole is very non-skid in wet and cold conditions, durable good cushioning effect

UK	3	3½	4	4½	5	5½	6	6½	7	7½	8	8½	9	9½	10	10½	11	11½	12	12½	13	13½	14	14½	15
EU	35	36	37	37	38	39	39	40	41	41	42	43	43	44	45	45	46	47	47	48	48	49	50	50	51
US	4	4½	5	5½	6	6½	7	7½	8	8½	9	9½	10	10½	11	11½	12	12½	13	13½	14	14½	15	15½	16

HAIX®-Schuhe, Produktions- und Vertriebs GmbH
Auhofstrasse 10, 84048 Mainburg, Germany
T. +49(0)8751/8625-0, F. +49(0)8751/8625-25
info@haix.de, www.haix.com



↗ Insole

The new insole made of abrasion-resistant polyester fabric on open-cell, breathable and quick-drying polyurethane foam, washable up to 30° C.

Low density midsole

Directly injected midsole made of lightweight PU foam connects the shaft inseparably to the sole. Highly elastic and durable cushioning.

Anti Slip

Excellent grip on a variety of terrains, even in the cold due to specific outsole design and use of special rubber.



↗ Outsole

Abrasion resistant and grippy rubber outsole. Perfect combination of stable central cleats and grippy lamellar cleats in the edge region. Coloured X-Zone for stabilization of the mid area and main roll-over area.

↗ High density midsole

Stabilizes the shoe and guides the foot during the rolling motion, prevents unevenness (stones, etc.) from pressing through to the foot.